



An ISO 9001:2015 Certified

GUJARAT
INDUSTRIAL CORPORATION

We make Quality Better

Scaffolding & Formwork Manufacturer and Exporter



SCAFFOLDING

Manufacturing

Rental Services

Installation

Training Program



ABOUT US

Established in the year 1999, Gujarat Group of Companies now become the leading player in the market for manufacturing and supplying the scaffolding and formwork Materials all over India. We are highly appreciated as the best company for delivering high-quality products at the most competitive pricing and on-time.

Under the leadership of Mr. Azaz Memon (MD of the Company), We have established a great reputation and are well-known as the most trusted manufacturers and suppliers for fulfilling the exact demands.

Being among the Best Scaffolding and formwork Materials Manufacturers and Suppliers in India, we make sure to meet the varied requirements of our clients with the utmost perfection. Driven by a team of highly-skilled, well qualified, and dedicated professionals, we are able to cater to the diverse needs of our customers in an appropriate and efficient way.

Backed by a state-of-the-art manufacturing unit, we are able to Manufacture the superior quality of scaffolding and formwork materials. Our main aim is to provide value to all our prestigious customers by offering great deals on the unmatched range of products.

WHY CHOSE US?

- 1. Buy Back** : We offer buy back services to our valuable Client.
- 2. Reconditioning** : We also provide on shore off shore Reconditioning for a value addition to our client service. T&C Apply

Vision



To Provide 1 lakh MT. of scaffolding and formwork services to the growing industries of india in financial year 2024 -25.

Mission



To become one stop Scaffolding and formwork solution for construction and infrastructure Industry.

Core Values



Integrity | Ethics | Continuous improvement | Quality & professionalism | Growth

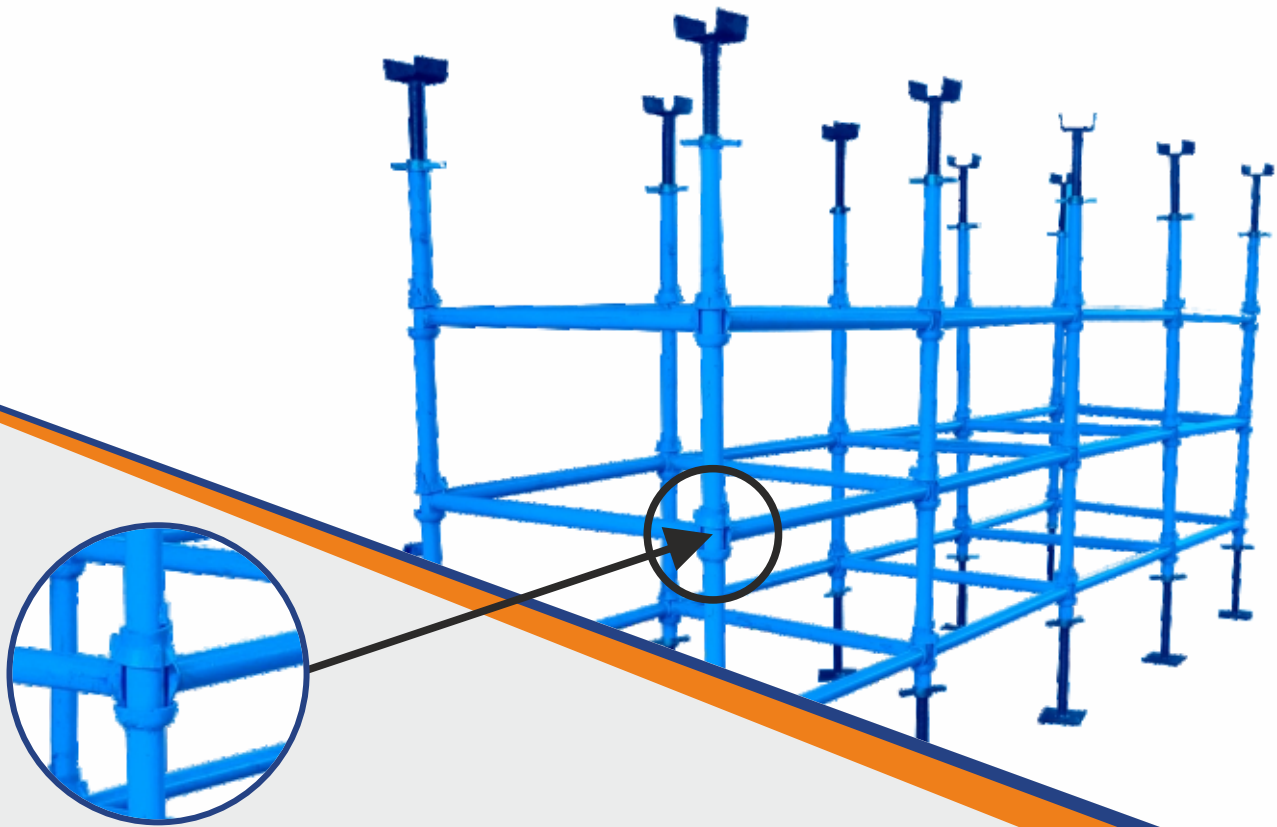
PROUD
BNI
MEMBER



MSME
MINISTRY OF MSME, GOVT. OF INDIA
OUR STRONGHOOD • OUR GROWTH

ISO 9001
2015
CERTIFIED





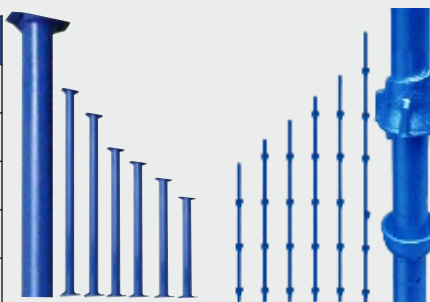
CUPLOCK SCAFFOLDING

Cuplock Scaffolding Manufacturers in India

Are you looking for the leading Cuplock Scaffolding Manufacturers in India ? If yes then Gujarat Industrial Corporation is the right destination for you to meet your Cuplock system requirements for supporting vertical loads and for general access. We manufacture these Cuplock systems by using the optimum quality of basic material.

Standard Size of Ledger

Size in Metre	Weight
Ledger 0.5 Mtr.	2.00 kg
Ledger 1.0 Mtr.	3.75 kg
Ledger 1.5 Mtr.	5.46 kg
Ledger 2.0 Mtr.	7.15 kg
Ledger 2.5 Mtr.	8.50 kg



Standard Size of Vertical

Size in Metre	Weight
1.00 Mtr. : 2 Cup	04.70 kg
1.50 Mtr. : 3 Cup	06.80 kg
2.00 Mtr. : 4 Cup	09.00 kg
2.50 Mtr. : 5 Cup	11.50 kg
3.00 Mtr. : 6 Cup	13.65 kg

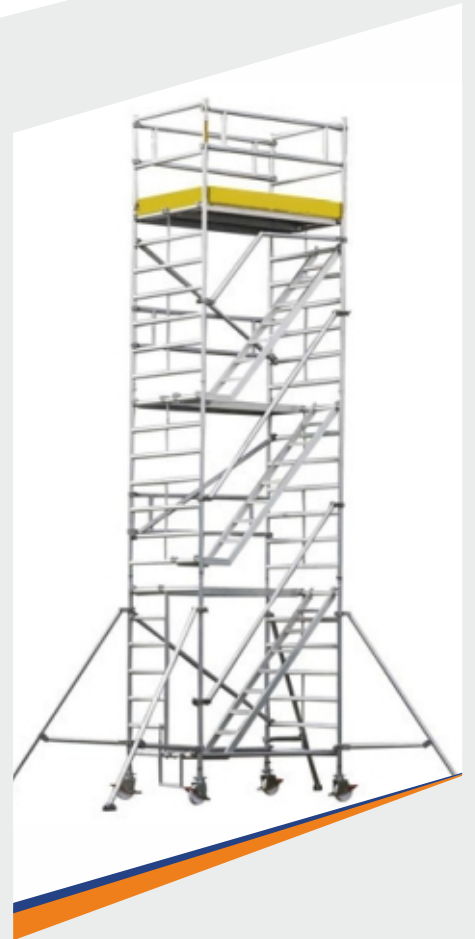
Vertical standards are made out of 40 NB "B" Class tube conform to IS 1161/1239. Pair of cups are provided at 500 mm C/C, but cups at 1000 mm C/C are available on request.



ALUMINIUM MOBILE SCAFFOLDING TOWER

Safe, Comfortable mobile scaffold tower for frequent climbing and descent with bulky and / or heavy loads.

- Scaffolding platforms width : 1.35 mtr. × Scaffolding length : 1.80 mtr.
- Working heights can be extended from 2 to max. 18 mtr. with standard parts.
- Comfortable entry into the scaffolding from outside through the wide entry frame stairways with 100 mm deep, non-slip tread surfaces and entry platform.
- 200 kg/m² loading capacity i.e. depending on platform length from 486 kg to max. 810 kg.



PLATFORM SIZE 1.35 X 1.80 M					
Working Height mtr.	4.50	6.45	8.40	10.40	12.35
Overall Height mtr.	3.50	5.45	7.40	9.40	11.35
Platform Height mtr.	2.50	4.45	6.40	8.40	10.35
Weight Kg.	123.7	206.2	258.9	311.6	364.3

ADJUSTABLE PROPS & U - BASE JACK

Product Specifications

- Product Type** : Base Jack, U jack
- Components** : Tubes, Rods
- Surface Treatment** : MS, GI
- Application** : Structure Pipe,
Construction, Interior
Refurbishing
- Color** : Self-Finished



Product Specifications

- Product Type** : MS Props
- Components** : Tubes
- Surface Treatment** : MS, GI
- Application** : Structure Pipe,
Construction,
Interior Refurbishing
- Color** : Blue, Black



WALKWAY PLATFORM



MS Jaali

300 mm x 6,7,8,10 feet
(25 mm) Square Pipe



GI Planks

GI Plank
W 280 x H 38 x L 2100 mm



MS Planks

MS Plank
W 280 x H 38 x L 2100 mm

TOE GUARD



(2 Mtr. Adjustable & 3 Mtr. Adjustable)

Note: We can customise as per you requirements

SHUTTERING MATERIAL

Are you looking for the best quality of Shuttering Material? If yes then you can count on us. We at Gujarat Industrial Corporation is highly reputed as the leading Shuttering Material Manufacturer in india, that caters to the diverse range of material requirements of clients at the best possible pricing.

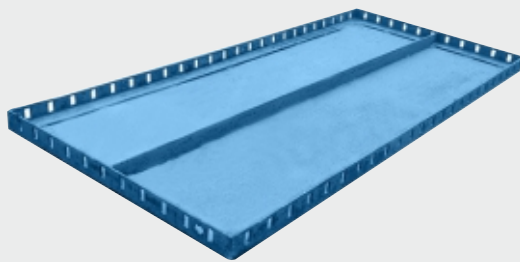
WIDE RANGE OF SHUTTERING MATERIAL

We are intrinsically involved in manufacturing and supplying a wide range of formwork material. Our offered shuttering material includes Shuttering Plate, Adjustable Props, Shuttering Tie Rod, Anchor Nut, Shuttering Wing Nut, Shuttering Water Stopper, Shuttering Wedge Pin, Shuttering Clamp / Shikanja, and Rebar Cap.

SHUTTERING PLATE

Different Sizes

600mm X 900mm | 1200mm X 450mm
900mm X 300mm | 1200mm X 300mm



H FRAME SCAFFOLDING

Available in Various Designs and Dimensions

We offer the good quality of H Frame Scaffolding for Sale that is available in various dimensions, designs, and finishing. You can choose from our wide range of products as per your specific requirements. We assure to manufacture and supply the fine-grade of products which are made of superior material.

Key Features

- Rugged Construction
- Unmatched Quality
- High-Reliability
- Long-Life
- Sophisticated Technology
- Competitive Pricing



TYPES OF FORMWORKS

Wall Formwork | Column Formwork | Slab Formwork

Wall Formwork

Wall formwork system is also a new way of casting different walls and lifts which is widely used now days. Wall Formwork can be form by just assembling different panels to each other with the help of its clamp. It requires side support to hold panels and this supports are rest on panel's section. As like column formwork panel same design frame also used in wall formwork.



Column Formwork

Column formwork system is modular in nature. it can be erected and dismantled fast and easy. Column of particular size can be formed by simply assembling 4 pieces of panels by clamps, additionally wallers can be added for higher sturdyness to this, tie rod and anchor nut will be used to strengthen column shuttering and it helps in side supports to hold the column.



Slab Formwork

Easy and rapid erection and dismantling. Higher number of repetitions. Velvety smooth finish exposure of concrete casting. Velvety of usages for different types of applications. Reduced requirement of labor and skilled worker hence cost effective.



SCAFFOLDING | CLAMPS



Coupler Forged Fix



Coupler Forged Swivel



Coupler Sheet Metal Fix



Coupler Sheet Metal Swivel



Board Retaining Coupler



Joint Pin



Ladder J Clamp



Girder Coupler



Leader Box Clamp



Sleeve Coupler



Putlog Coupler



Wall Support Aluminium Ladder

ACCESSORIES



T Bolt



Base Plate



Lifting Bag



Clet & Wedg



V Head Pipe Stand



Tag Holder



Top & Bottom Cup



Ledger Blade



Shuttering Clamp (Shikanja)



Tie Rod



Anchor Nut



Wing Nut



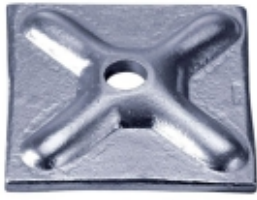
Gogo Nut



Water Stopper



Threaded-rod



Waller Plate



Rapid Clamp



Prop Sleeve



Prop & Jack Nut



Caster Wheel



Single Clamp



Gogo Machine



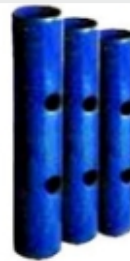
Rebar Cap



Pipe End Cap



Washer Pin



Spigot Pipe

GROUP OF COMPANIES



An ISO 9001-2008 Certified Company

**All types of Safety Items
Manufacturers & Distributors**

E-mail : info@gujaratsafety.com • website : www.gujaratsafety.com



**Fire Fighting Projects, Refilling Fire Extinguisher
Alarm System & Maintenance Contract**

E-mail : sales@junanifire.com | Website : www.junanifire.com



All type of Welding, Hardware, Power Tools

E-mail : sales@safeenterprise.in • website : www.safeenterprise.in



Committed to superior quality and results.

E-mail : info@sanghadiagroup.com
Web.: www.sanghadiagroup.com

SOME OF OUR VALUABLE CLIENTS



**AM/NS
INDIA**



THERMAX

**Thirumalai
Chemicals Ltd.**



& Many More...



An ISO 9001:2015 Certified

GUJARAT
INDUSTRIAL CORPORATION

Scaffolding & Formwork Manufacturer and Exporter

- 📍 **Head Office:** Plot No. A1/1, Nr. ABC Circle, GIDC Phase 1, Bharuch - 392 015 (Gujarat).
- 📍 **Branch Office:** GF - 2, Maniar Wonderland, Nr. Kiran Moters, Sarkhej Sanand Rd., Sarkhej, Ahmedabad - 382210
- ✉ info@gujaratscaffolding.com
- 🌐 www.gujaratscaffolding.com
- ☎ **+91 73594 84708**

We Are Available

SAUDI ARABIA | UAE
AFRICA | OMAN